

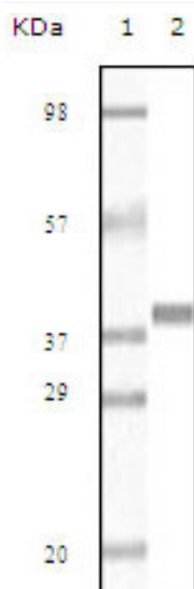


Myoglobin Monoclonal Antibody

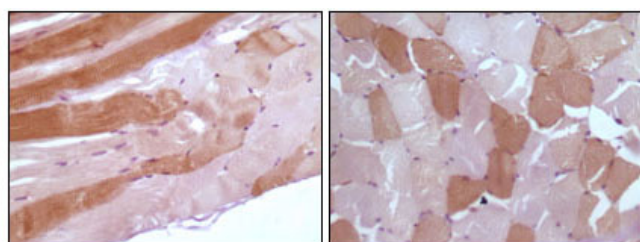
Catalog No	YP-Ab-00613
Isotype	IgG
Reactivity	Human
Applications	WB;IHC;IF;ELISA
Gene Name	MB
Protein Name	Myoglobin
Immunogen	Purified recombinant fragment of Myoglobin expressed in E. Coli.
Specificity	Myoglobin Monoclonal Antibody detects endogenous levels of Myoglobin protein.
Formulation	Purified antibody in PBS containing 0.03% sodium azide.
Source	Monoclonal, Mouse
Purification	Affinity purification
Dilution	WB: 1/500 - 1/2000. IHC: 1/200 - 1/1000. ELISA: 1/10000.. IF 1:50-200
Concentration	1 mg/ml
Purity	≥90%
Storage Stability	-20°C/1 year
Synonyms	MB; Myoglobin
Observed Band	
Cell Pathway	extracellular exosome,
Tissue Specificity	Heart,Skeletal muscle,
Function	function:Serves as a reserve supply of oxygen and facilitates the movement of oxygen within muscles.,similarity:Belongs to the globin family.,
Background	This gene encodes a member of the globin superfamily and is expressed in skeletal and cardiac muscles. The encoded protein is a haemoprotein contributing to intracellular oxygen storage and transcellular facilitated diffusion of oxygen. At least three alternatively spliced transcript variants encoding the same protein have been reported. [provided by RefSeq, Jul 2008],
matters needing attention	Avoid repeated freezing and thawing!
Usage suggestions	This product can be used in immunological reaction related experiments. For more information, please consult technical personnel.



Products Images



Western Blot analysis using Myoglobin Monoclonal Antibody against truncated Myoglobin recombinant protein.



Immunohistochemistry analysis of paraffin-embedded human skeletal muscle tissue showing cytoplasmic localization with DAB staining using Myoglobin Monoclonal Antibody.